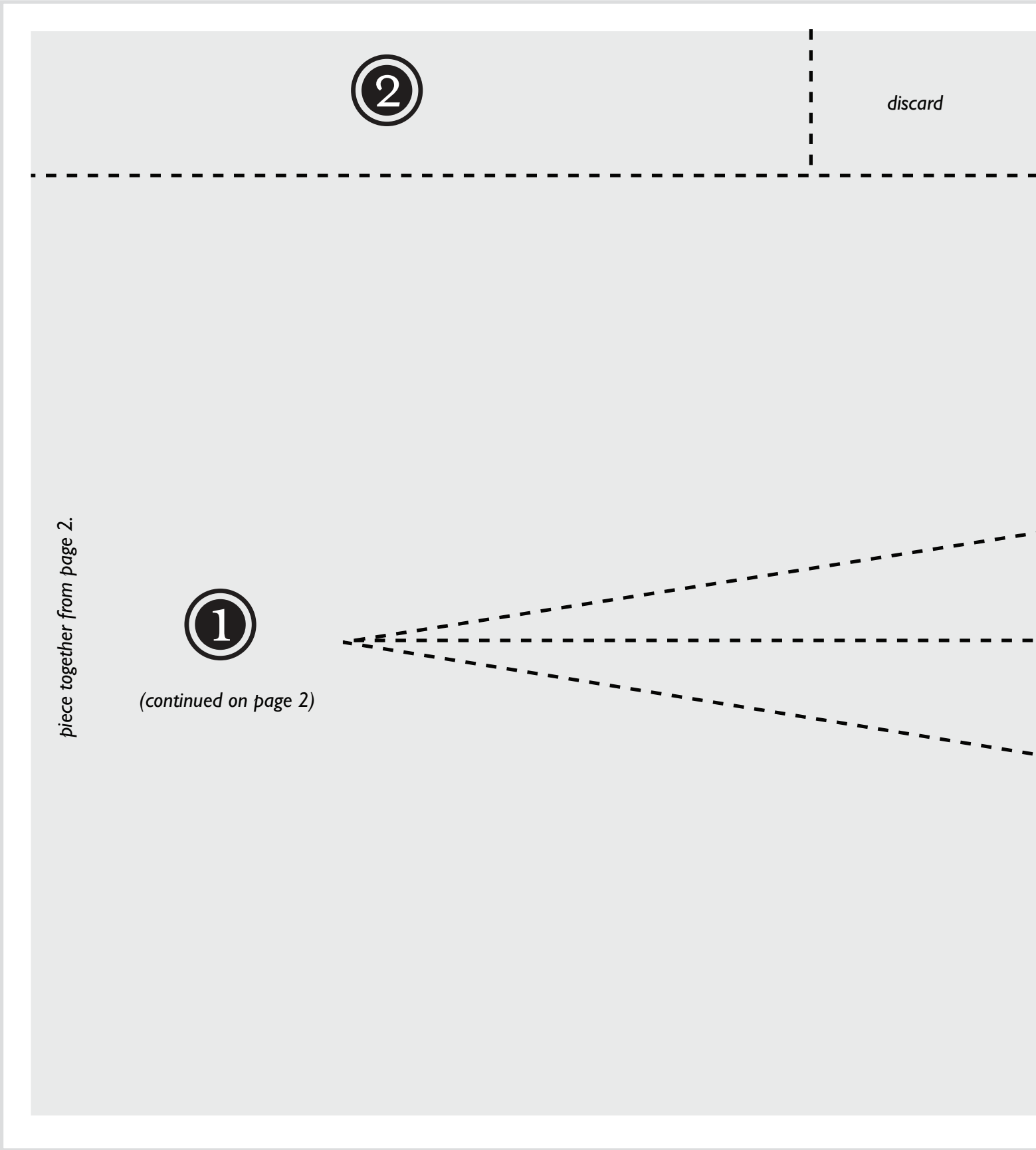


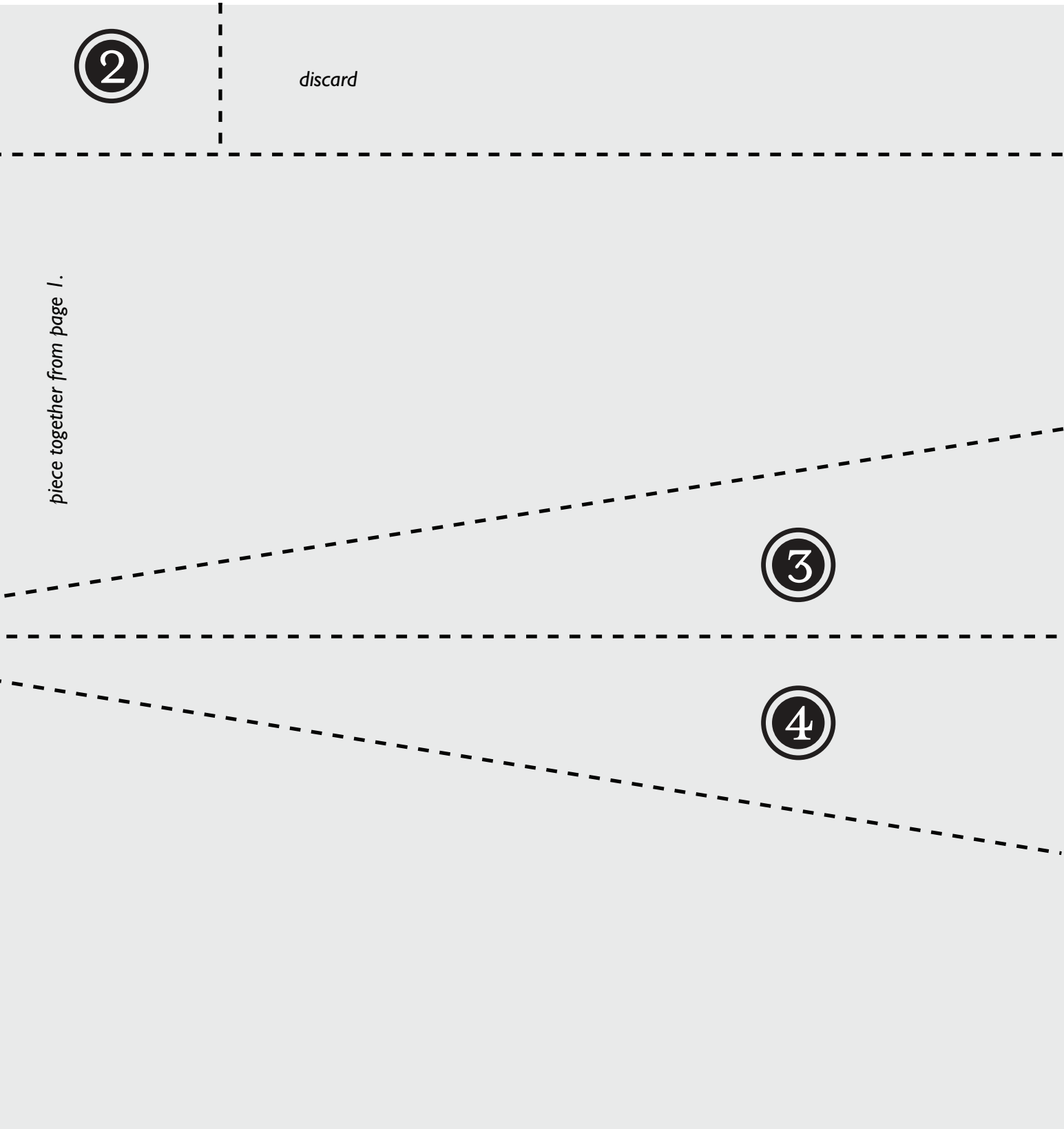
Groovy Jeans Cake Template

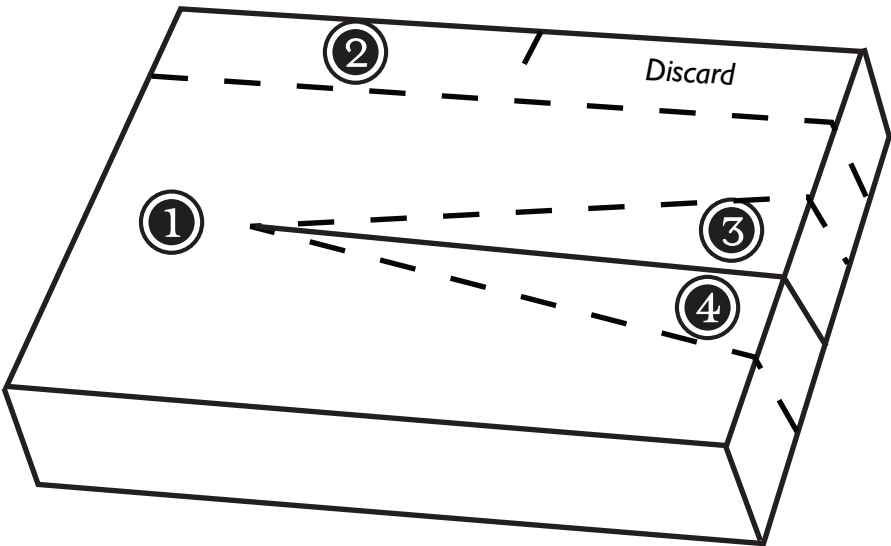
13-INCH x 9-INCH BAKING PAN *(Print on 8 1/2 x 11-inch paper and apply to cooled or frozen cake.)*



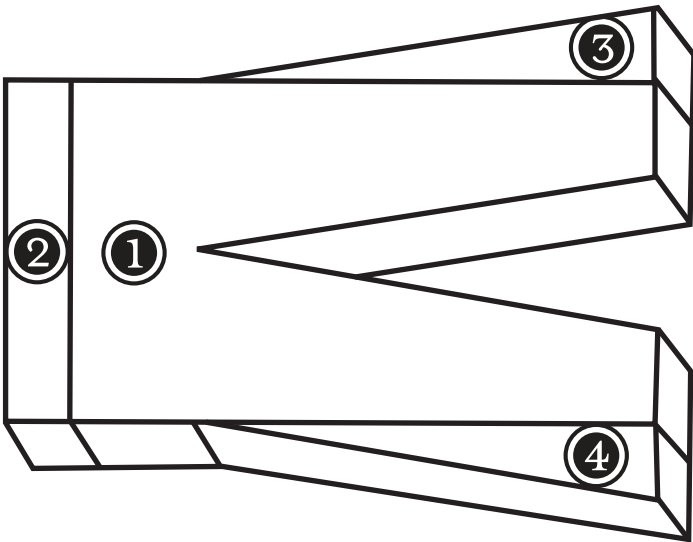
Groovy Jeans Cake Template

13-INCH x 9-INCH BAKING PAN *(Print on 8 1/2 x 11-inch paper and apply to cooled or frozen cake.)*





Cut cake into pieces.



Arrange pieces on tray to form jeans.

Groovy Jeans Cake Recipe

Betty Crocker®

Celebrate in style with a cake that's a snap to cut, assemble and decorate.

Prep Time: 35 hr

Start to Finish: 3 hr 15 min

Makes: 12 servings



- 1 box Betty Crocker® SuperMoist® cake mix (any flavor)
Water, vegetable oil and eggs called for on cake mix box
Tray or cardboard, 15 x 12 inches, covered
 - 2 1/2 cups Betty Crocker® Rich & Creamy vanilla frosting (from two 1-lb containers)
Blue paste food color
 - 1 roll Betty Crocker® Fruit by the Foot® Berry Tie-Dye® chewy fruit snack (from 4.5-oz box)
Assorted decorations (licorice pieces, candy decors, yellow shot, candy-coated almonds)
1. Heat oven to 350°F (325°F for dark or nonstick pan). Grease bottom and sides of 13x9-inch pan and lightly flour, or spray with baking spray with flour. Make cake as directed on box, using water, oil and eggs. Pour into pan. Bake as directed on box. Cool 10 minutes; remove from pan to cooling rack. Cool completely, about 1 hour.
 2. Use toothpicks to mark sections of cake to be cut (see diagram). Use serrated knife to cut cake into sections.
 3. On tray, place largest piece. Place 1 1/2-inch strip of cake along top edge of jeans; cut off excess. Place triangles along outer edges of legs. Cover; freeze 1 hour or until firm.
 4. Tint frosting with blue food color. Remove cake from freezer; frost sides and top of cake. Use fork or decorating comb to create fabric texture.
 5. To decorate cake, cut fruit snack into 8-inch length and 6-inch length. Place fruit snack on top edge of cake, overlapping in center, for belt. Decorate as desired with candies. Store loosely covered at room temperature.

High Altitude (3500-6500 ft): Follow High Altitude directions on box for 13x9-inch pan.